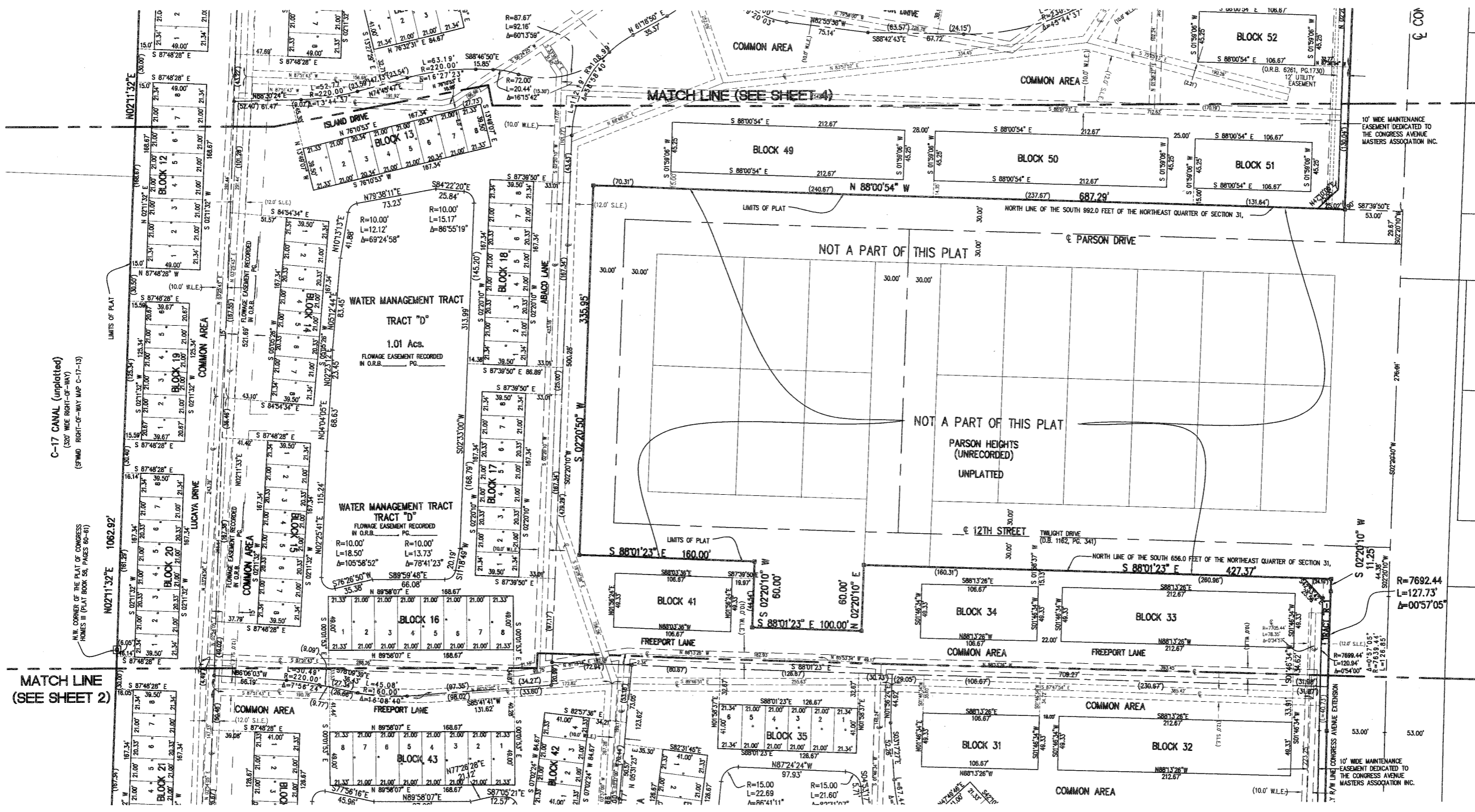
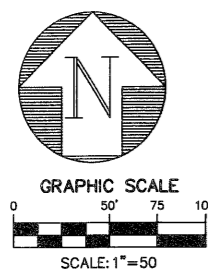


MARSH HARBOUR

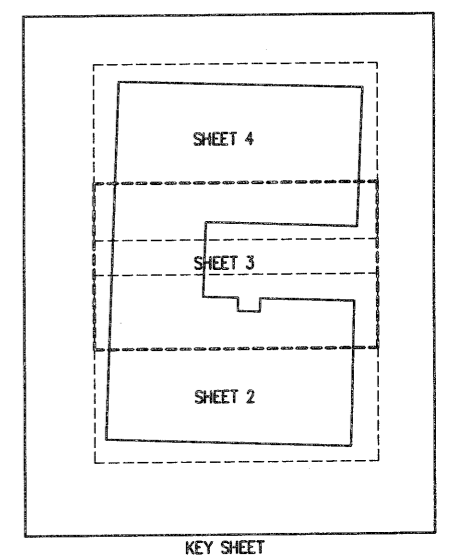
Being a replat of Congress Park Homes III as recorded in Plat Book 58, Pages 60 and 61, Public Records of Palm Beach County, Florida, together with portions of the Northeast Quarter of Section 31, Township 42 South, Range 43 East, Palm Beach County, Florida.

SHEET 3 OF 4
MAY 2006



LEGEND

- U.E. = UTILITY EASEMENT
- D.E. = DRAINAGE EASEMENT
- [] = PERMANENT REFERENCE MONUMENT SET #6603.
- = PERMANENT CONTROL POINT #6603.
- CH = CHORD
- R = RADIUS
- L = ARC LENGTH
- Δ = CENTRAL ANGLE
- (N.R.) = NON-RADIAL
- O.R.B. = OFFICIAL RECORD BOOK
- PG. = PAGE
- L.M.E. = LAKE MAINTENANCE EASEMENT
- P.O.C. = POINT OF COMMENCEMENT
- P.O.B. = POINT OF BEGINNING
- W.L.E. = WATER LINE EASEMENT
- S.L.E. = SEWER LINE EASEMENT
- RPB. = ROAD PLAT BOOK
- R.O.W. = RIGHT-OF-WAY
- P.B. = PLAT BOOK
- ⊕ = CENTER LINE



THIS INSTRUMENT PREPARED BY ANDRE' RAYMAN, P.S.M. LS#4936 STATE OF FLORIDA.
SFRN, INC., ENGINEERS, SURVEYORS & MAPPERS
1201 BELVEDERE ROAD, WEST PALM BEACH, FLORIDA 33405.
CERTIFICATE OF AUTHORIZATION NO. LB0006603

MARSH HARBOUR

SFRN

DATE 11/13/2004
 SCALE 1" = 50'
 CAD FILE 4016plat.dwg
 SISK PROJECT 4016
 DRAWN SFRN STAFF
 CHECKED G. RAYMAN

SHEET NO. **3/4**
 JOB NO. **04016**

Engineers • Surveyors • Mappers
 1201 BELVEDERE ROAD, WEST PALM BEACH, FLORIDA 33405
 PH (561)855-1151 • FAX (561)832-9390 • WWW.SFRNINC.COM